

MONTHLY MEMBERSHIP PROGRESS REPORT

LOCATION REP OF SRI LANKA

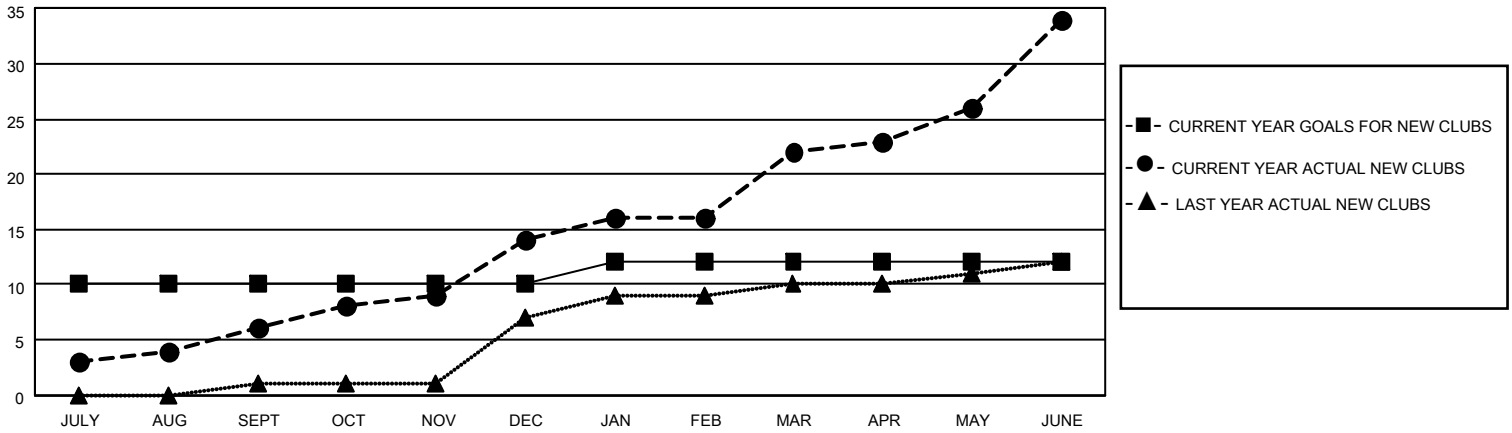
District 306 C1

Results as of: 6/30/2022

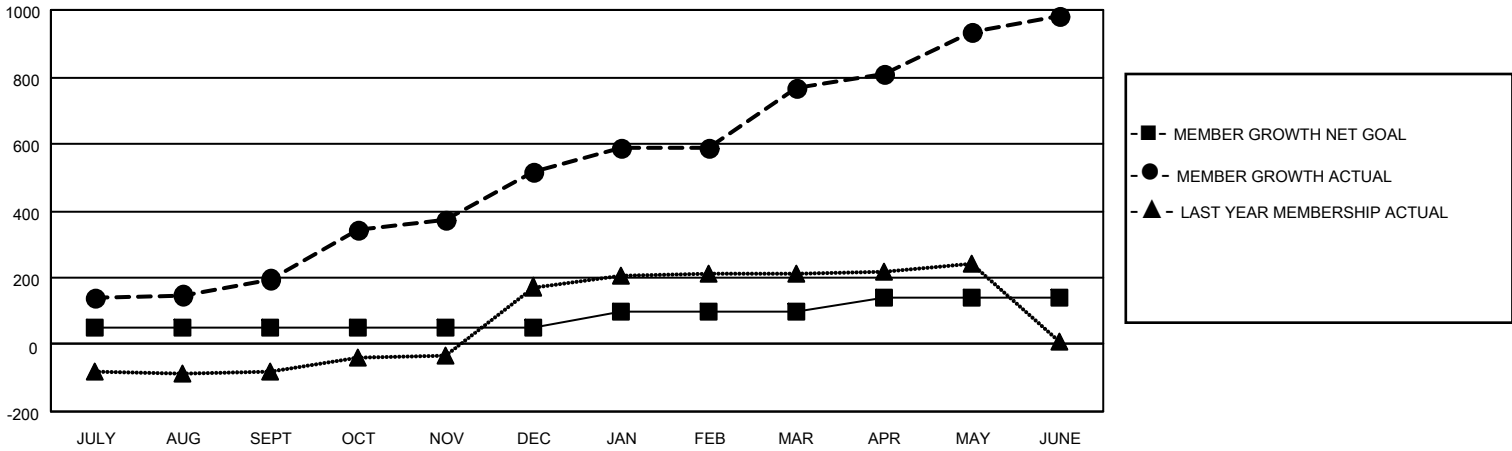
Clubs			
RESULTS FOR 2021-2022			
QUARTER	NEW CLUB GOAL	NEW CLUBS	DROPPED CLUBS
JULY/AUG/SEPT	10	6	1
OCT/NOV/DEC	0	8	0
JAN/FEB/MAR	2	8	0
APR/MAY/JUNE	0	12	0

Members			
RESULTS FOR 2021-2022			
QUARTER	MEMBER GROWTH NET GOAL	MEMBER GROWTH ACTUAL	DROPPED MEMBERS ACTUAL (including transfers)
JULY/AUG/SEPT	50	361	93
OCT/NOV/DEC	0	376	48
JAN/FEB/MAR	50	289	28
APR/MAY/JUNE	40	546	306

GOALS AND ACTUAL NEW CLUBS CUMULATIVE



GOALS AND ACTUAL MEMBERS CUMULATIVE



DROPPED CLUBS: 1	
DROPPED MEMBERS	
DECEASED	12
CLUB CANCELLED	52
OTHER	411
TOTAL	475

124 CLUBS OF 143 ADDED 1 OR MORE NEW MEMBERS

[CLICK HERE FOR CUMULATIVE MEMBERSHIP DATA](#)

<u>GENDER DISTRIBUTION</u>	
MALE	2,917 (73.92%)
FEMALE	1,028 (26.05%)
NON BINARY	0 (0.00%)
PREFER NOT TO ANSWER	1 (0.03%)
TOTAL FAMILY UNIT MEMBERS	
	1,664
FAMILY MEMBERS PAYING HALF DUES	
	1,060